

# Sage ERP Accpac

## Version 6.0

### See Your Business in a New Way

As the world of business is constantly evolving, so must your business management software. At Sage, we work to continually improve your experience with Sage ERP Accpac and develop new functionality to help you get more out of your solution. We work directly with our extensive customer base (over 45,000 companies and 200,000 users) to ensure our products work the way you do to improve processes and enhance productivity. Over the past year, over 5,000 customers and partners worldwide have been consulted through on-site visits, surveys, interviews, and observational studies in our state-of-the-art usability laboratories. The results of this rigorous research are poured into the product development process to help us design and build better software.

The key enhancements developed in Version 6.0 will help you see your business in a new way to improve productivity, envision success, and accelerate the growth of your business. How can you get your hands on all of the dynamic new features packed into this version? Great news! You are entitled to software upgrades and maintenance updates as part of your Sage Business Care plan. Need to renew your plan? Simply contact us at 1-866-709-2436 (1-615-777-6150 for international) today.

Quickly get all employees up to speed on the improvements in this release through the "What's New" Anytime Learning course specifically for Version 6.0. This online course demonstrates how you can put all of the great new enhancements to work in your business. Best of all, this course is offered at no additional cost to you. Visit [www.SageU.com/accpac](http://www.SageU.com/accpac) for details.

Sage ERP Accpac contains the power and tools to help you see your business in a new way and realize the future of your business today.



#### BENEFITS

**HARNESS THE POWER OF WEB TECHNOLOGY**  
New web 2.0 technology framework facilitates the interactive information sharing, collaboration, and mobility required for success in today's fast-paced business environment

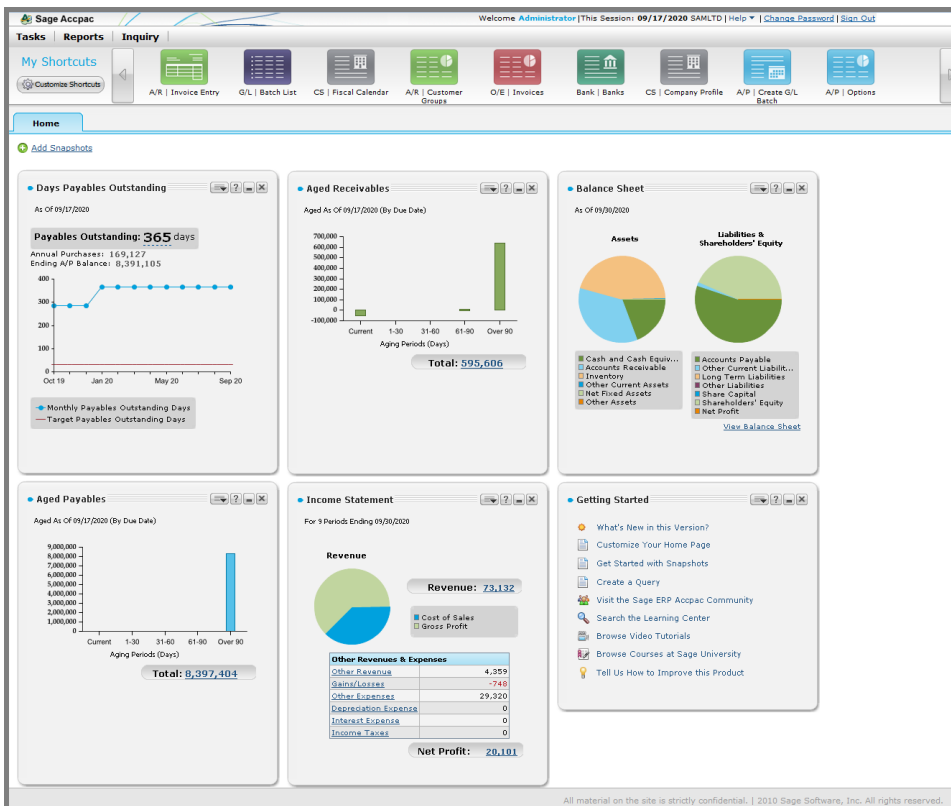
**IMPROVE PRODUCTIVITY**  
Get personalized, role-based information access, simplifying everyday processes and saving time, so more time is spent on strategic activities.

**ENVISION SUCCESS**  
Increase insight with secure access of key performance indicators (KPIs), with drill-down capabilities to underlying reports.

**GREATER BUSINESS VISIBILITY**  
Enable better decisions through customized information access without the in-depth programming and database knowledge required to write a custom report.

**ACCELERATE GROWTH**  
Boost profitability and cut costs by dynamically linking front- and back-office processes, information, workflows, and communication channels.

◆ New Portal provides easy access to business intelligence and puts everyday tasks at your fingertips.



All material on the site is strictly confidential. | 2010 Sage Software, Inc. All rights reserved.



"We always have a strong sense of where our business is, for example cash flow, receivables, payables. Moreover, the reporting capabilities are extremely comprehensive."

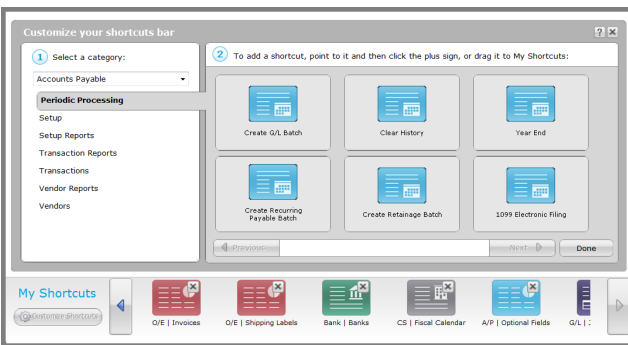
Paul Plut, director of operations,  
Body 'n Scents

## Harness the Power of Web Technology

As the first release in our journey of the next generation of ERP solutions, Sage ERP Accpac 6.0 introduces a new common technology platform that is based upon industry standards such as HTML5, ATOM, RSS, and XML. Using the Google Web Toolkit as its foundation, the new Sage Data (SData) and the Sage Web Toolkit (SWT) will provide our developers with tools to easily and rapidly build applications that integrate into the Sage ERP Accpac 6 Series to support better interoperability between systems. The result—mobile ERP software that truly works the way you want it to—seamlessly, efficiently, intelligently, and cost-effectively, so you can see your business in a new way to improve productivity, envision success, and accelerate growth.

## Improve Productivity

The new Sage ERP Accpac Portal simplifies desktop navigation and allows users customizable, faster access to information so they can accomplish everyday tasks more quickly and focus on strategic projects. The classic Sage ERP Accpac Desktop will coexist with the new portal, to facilitate adoption for current users; however, with the new intuitive layout experts and novices alike will be navigating through their daily tasks in record time. Take control of your desktop and easily create custom shortcuts to access the screens used most often and view them on your shortcut bar. A new "Getting Started" help screen is also available to get you up and running more quickly than ever before.

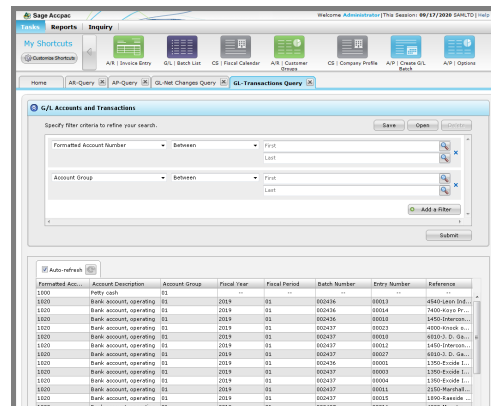


## Envision Success

The new Sage ERP Accpac Snapshots allow secure access of key performance indicators (KPIs) directly from the portal and includes drilldown capabilities to underlying financial reports. The graphical presentation of information helps with quick identification of trends or issues for more proactive business decisions. Snapshots are easily customized, so you can focus on what's relevant and administrators can manage security settings to control access to—based on role. Proactively track trends, such as revenue, outstanding accounts, and other performance indicators. Snapshots will help you prioritize tasks and identify opportunities—which results in a boost to your bottom line.

## Greater Business Visibility

Empower users at all levels of the organization to gain immediate access to information from Sage ERP Accpac providing greater business visibility and insight to improve business performance. The new Inquiry tool helps uncover opportunities and highlight possible issues, enabling your workforce to make better decisions and execute appropriate actions in response to ever-changing business needs. Sage ERP Accpac Inquiry allows even inexperienced users to create personalized ad-hoc query lists in just a few minutes without the knowledge of databases, programming, or web technologies. The highly intuitive interface puts custom information access within easy reach of everyday nontechnical users and means minimal training and IT support. It's quick and easy to create database connections, add fields, and customize data.



## Accelerate Growth

Version 6.0 can help you accelerate growth and lower total cost of ownership (TCO) with SageCRM Workflow Enhancements that improve information flow between the front and back office and changes to the management of fiscal periods. In addition, the Sage ERP Accpac Intelligence is included to provide comprehensive business intelligence in a familiar Microsoft® Excel environment.

## About Sage North America

Sage North America is part of The Sage Group plc, a leading global supplier of business management software and services. Sage North America employs 4,000 people and supports 3.2 million small and mid-sized business customers. The Sage Group plc, formed in 1981, was floated on the London Stock Exchange in 1989 and now employs 13,400 people and supports 6.3 million customers worldwide. For more information, please visit the website at [www.SageNorthAmerica.com](http://www.SageNorthAmerica.com).